

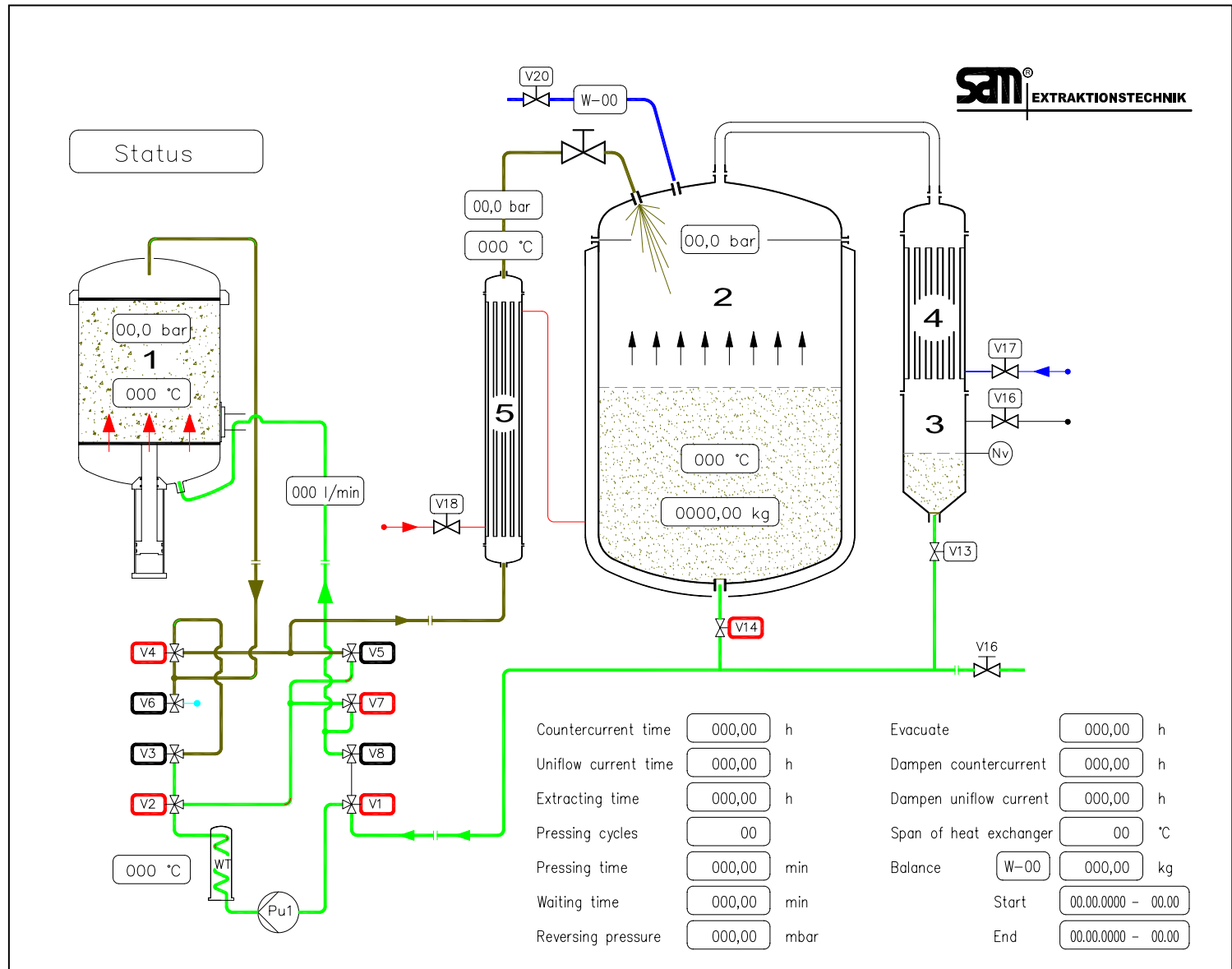
OPERATING MANUAL

DIG - MAZ 10 - 2000



PROGRAM INPUT

VISUALIZED



Adjustment of machine DIG-MAZ 10 - 2000

Send data to control						
Countercurrent time:	15	min	15	0	h	0
Uniflow current time:	15	min	15	0	h	0
Extracting time:	30	min	30	2	h	2
Pressing cycles:	2		2			
Pressing time:	3	min	3			
Waiting time:	5	min	5	Span of heat exchanger		
Nominal temperature:	85	°C	85	3	°C	3
Reversing pressure:	3000	mbar	3000			
Evacuation time:	17	min	17			
Steam countercurrent:	10	min	10	2	h	2
Steam uniflow current:	10	min	10			

Program started:	0	
Start of measuring:	03.01.2002	0:00:00
End of measuring:	04.01.2002	11:04:50

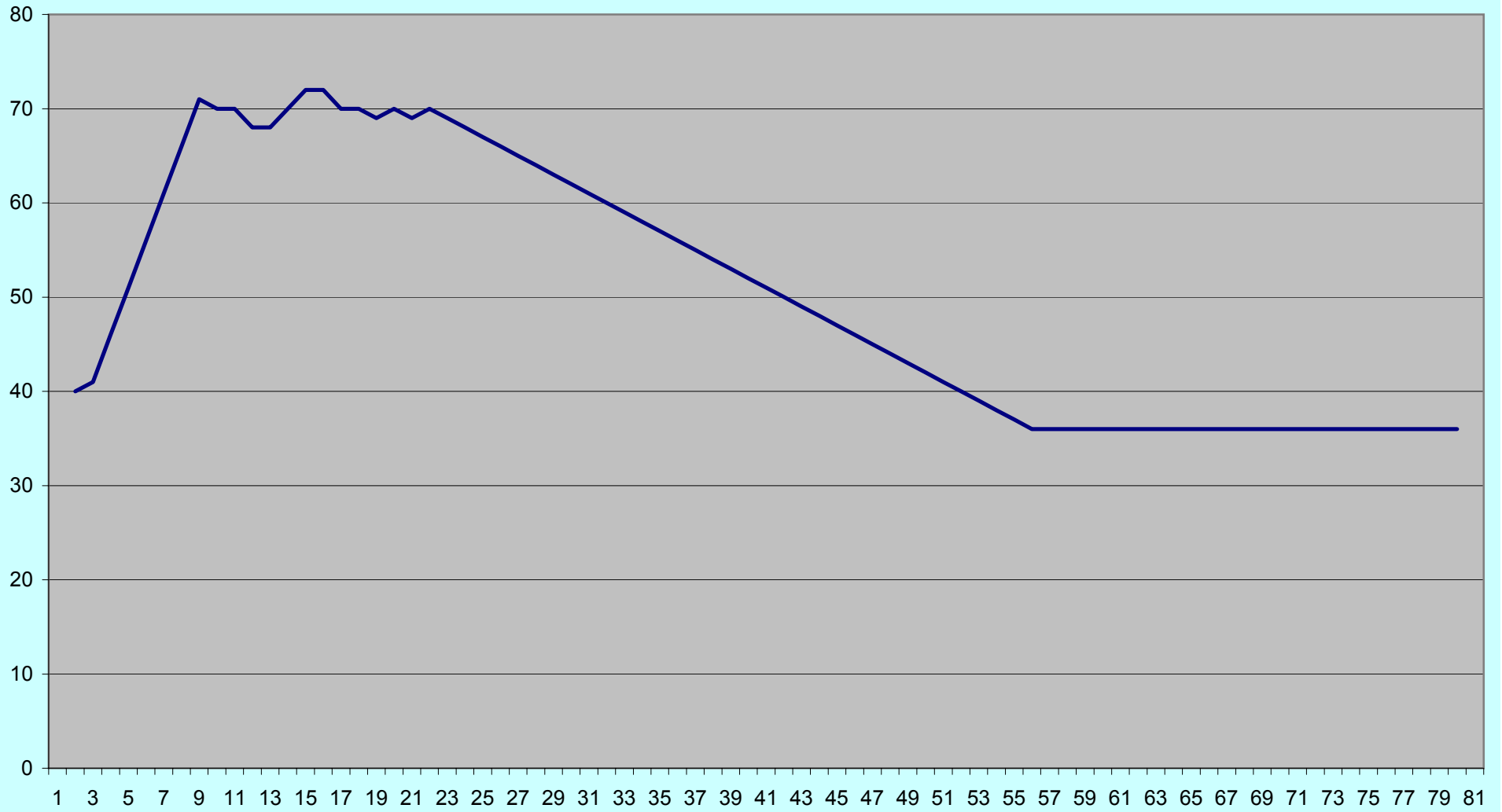
DigMaz [°C]	pressure [bar]	NEW SERIES OF

Current condition of plant

Next measuring no.	0	
Measure time (60 sec) SPS	0	
Actual-t DigMaz:	0	°C
Actual-p DigMaz:	-1000	mbar
Actual-t heat exchanger:	0	°C
Actual-t solvent tank:	0	°C
Total time NOMINAL / ACTUAL	184	0
Current program step:	0	0
Current countercurrent time:	0	min
Current uniflow current time:	0	min
Current extracting time:	0	min
Current extracting time 2:	0	min

DigMaz STOP	Step 0:	
Flood	Step 1:	2
Filling	Step 2:	15
Countercurrent	Step 3:	15
Uniflow current	Step 4:	15
Evacuate	Step 5:	17
Pressing	Step 6:	3
Pressing pause	Step 7:	5
Compressed air ON	Step 8:	2
Blow off	Step 9:	2
Pressure compensation	Step 10:	1
Steam countercurrent	Step 11:	10
Steam uniflow current	Step 12:	2
Extracting time		150
Extracting time 2		130
Total time calculated		347

Temperature curve DigMaz



Pressure curve

